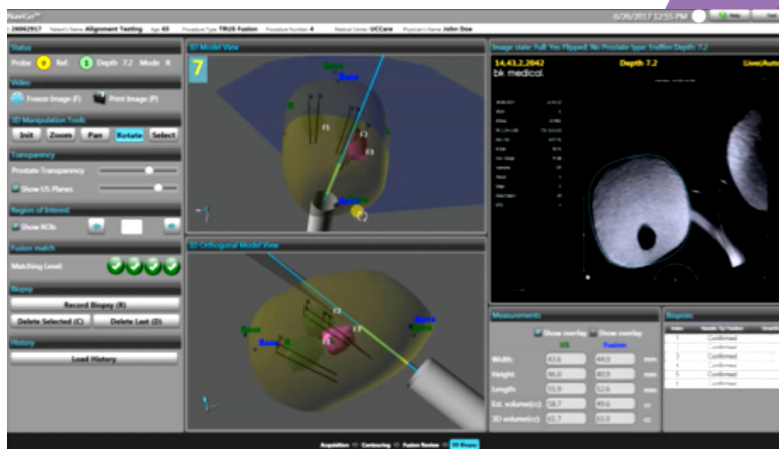
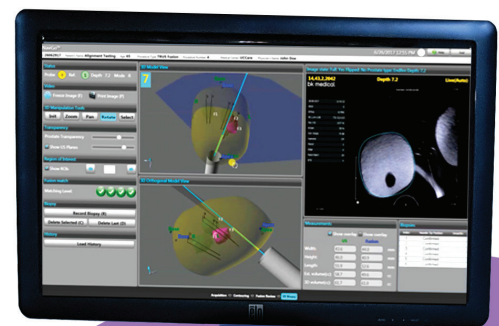


ACCURATE MODELING ACCURATE TARGETING

MRI/TRUS FUSION-GUIDED BIOPSY SYSTEM

- Touchscreen user interface
- Automatic contouring of ultrasound prostate segments
- Automatic capture of ultrasound images & biopsy needle positions
- Rotatable 3D image saved for historical reference



3D MODEL OF PROSTATE
WITH BIOPSY LOCATIONS



MRI/TRUS FUSION-GUIDED BIOPSY SYSTEM

Navigo™

OFFICE BIOPSY SET-UP

ULTRASOUND



NAVIGO™ SYSTEM



MAGNETIC FIELD GENERATOR



- Compact console
- Patient sensor compensates for movement
- Compatible with variety of ultrasound systems

 **HealthTronics®**

healthtronics.com 888-252-6575

The Navigo™ system is manufactured by UC-Care Medical Systems, Yokneam, Israel.