

# FREEDOM TO CHOOSE THE RIGHT APPROACH FOR YOU

bkFusion

Transperineal



Transrectal



**bk**   
medical

bkFusion allows you to choose the method that fits your clinical needs. You have the freedom to perform biopsies using the **transperineal** (stabilized or freehand) or **transrectal** (sidefire or endfire) approach.

# bkFusion

## OUTSTANDING VISUAL GUIDANCE FOR YOUR FUSION BIOPSIES

Fusing powerful real-time ultrasound images with pre-exam MRI data gives you better guidance to help accurately target lesions identified on the MRI images, potentially reducing the risk of missing high-grade tumors or under-staging tumors for active surveillance.

### FAST AND INTUITIVE

bkFusion offers an easy and familiar workflow to make prostate biopsy procedures as efficient as possible using the right approach for you - transperineal (freehand or stabilized) or transrectal (sidefire or endfire).

### UNMATCHED IMAGE QUALITY

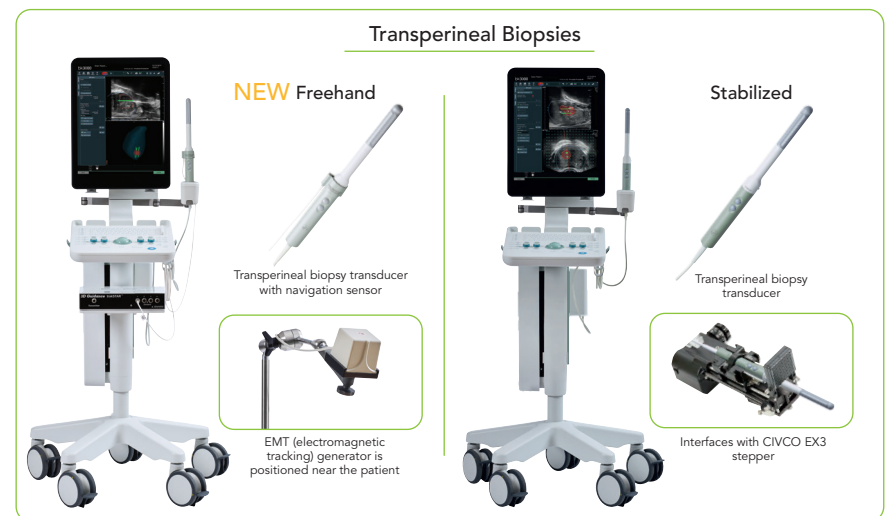
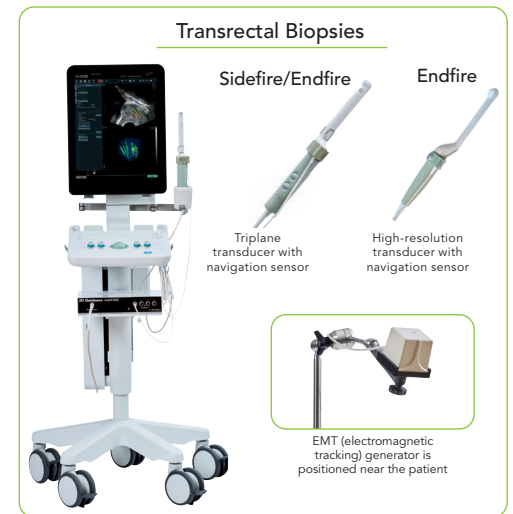
Quickly identify lesions and perform targeted biopsies using images with high spatial, temporal, and contrast resolution.

### MAINTAIN CONTROL

The urologist maintains control of the entire procedure and can freely adjust ultrasound gain and depth or choose to scan in different planes (transverse, sagittal and endfire) to better target areas of concern, without the need to resweep or recalibrate during procedures.

### ONE INTEGRATED SYSTEM

Single-system footprint with simultaneous display of MRI and real-time ultrasound images on one monitor.



bkFusion Powered by: 

BK Medical  
8 Centennial Drive  
Peabody,  
MA 01960  
USA  
T +1 978 326 1300  
bkmedical.com

USA  
Sales & Service  
BK Medical  
8 Centennial Drive  
Peabody, MA 01960  
USA  
T +1 978 326 1300  
F +1 978 326 1399  
bkmedical.com

Europe and Rest of World  
Sales, Service & Design Center  
BK Medical  
Mileparken 34,  
2730 Herlev, Denmark  
T +45 4452 8100  
F +45 4452 8199  
bkmedical.com